

DATE: _____

CITY OF CHEYENNE - RESIDENTIAL DECK TABLE
MINIMUM JOIST, BEAM AND CAISSON SIZES
 OR AS DESIGNED BY A REGISTERED ARCHITECT OR ENGINEER

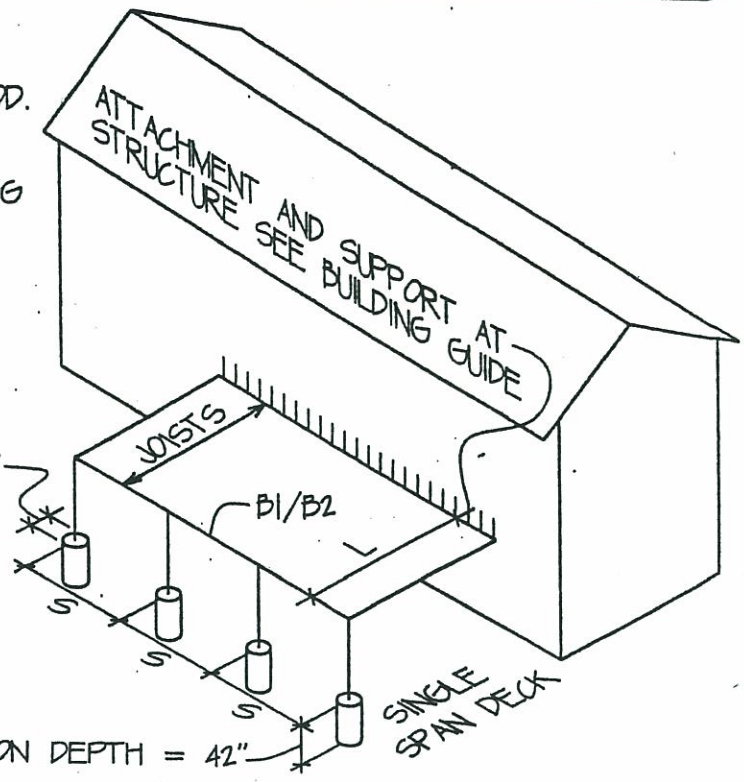
APPROVED: _____
 CITY ENGINEER

- NOTES:
1. ALL JOISTS AND BEAMS TO BE HEM FIR #2 OR REDWOOD #2 AND BETTER.
 2. POST ARE TO BE 4X4 TREATED OR REDWOOD.
 3. CAISSON DEPTH IS 36" MINIMUM BELOW FINISHED GRADE.
 4. TABLES ARE TO BE USED WITH THE FRAMING DETAILS OUTLINED IN THE BUILDING GUIDE.
 5. MAXIMUM JOIST CANTILEVER LIMITED TO 24".
 6. SEE BUILDING GUIDE FOR CAISSON DEPTH DETAIL.

JOIST LENGTH "L" ft

	JOIST SIZE AND SPACING
4'	2X4 @ 24" O.C.
6'	2X4 @ 16" O.C. 2X6 @ 24" O.C.
8'	2X6 @ 16" O.C. 2X8 @ 24" O.C.
10'	2X6 @ 12" O.C. 2X8 @ 24" O.C.
12'	2X8 @ 16" O.C. 2X10 @ 24" O.C.
14'	2X8 @ 12" O.C. 2X10 @ 16" O.C.
16'	2X10 @ 12" O.C. 2X12 @ 16" O.C.

CAISSON DIAMETER "C"



CAISSON DEPTH = 42"

The City of Cheyenne residential deck design is not approved to support a hot tub or other large concentrated loads.

JOIST LENGTH "L" ft

POST SPACING "S" ft

	4'	6'	8'	10'	12'	14'	16'
4'	C: 12" ø B1: 2x6 B2: 2-2x4	C: 12" ø B1: 2x6 B2: 2-2x4	C: 12" ø B1: 2x6 B2: 2-2x4	C: 14" ø B1: 2x6 B2: 2-2x4	C: 14" ø B1: 2x6 B2: 2-2x4	C: 16" ø B1: 2x6 B2: 2-2x6	C: 16" ø B1: 2x8 B2: 2-2x6
6'	C: 12" ø B1: 2x6 B2: 2-2x4	C: 12" ø B1: 2x8 B2: 2-2x6	C: 14" ø B1: 2x8 B2: 2-2x6	C: 16" ø B1: 2x8 B2: 2-2x6	C: 18" ø B1: 2x10 B2: 2-2x6	C: 18" ø B1: 2x10 B2: 2-2x8	C: 20" ø B1: 2x10 B2: 2-2x8
8'	C: 12" ø B1: 2x8 B2: 2-2x6	C: 14" ø B1: 2x8 B2: 2-2x6	C: 16" ø B1: 2x10 B2: 2-2x8	C: 18" ø B1: 2x10 B2: 2-2x8	C: 20" ø B1: 2x12 B2: 2-2x8	C: 20" ø B1: 2x12 B2: 2-2x10	C: 22" ø B1: _____ B2: 2-2x10
10'	C: 14" ø B1: 2x8 B2: 2-2x6	C: 16" ø B1: 2x10 B2: 2-2x8	C: 18" ø B1: 2x12 B2: 2-2x8	C: 20" ø B1: 2x12 B2: 2-2x10	C: 20" ø B1: _____ B2: 2-2x10	C: 22" ø B1: _____ B2: 2-2x12	C: 24" ø B1: _____ B2: 2-2x12
12'	C: 14" ø B1: 2x10 B2: 2-2x8	C: 18" ø B1: 2x12 B2: 2-2x10	C: 20" ø B1: _____ B2: 2-2x10	C: 20" ø B1: _____ B2: 2-2x12	C: 22" ø B1: _____ B2: 2-2x12	C: 24" ø B1: _____ B2: 2-2x12	ENGINEERING DESIGN REQUIRED
14'	C: 16" ø B1: 2x12 B2: 2-2x8	C: 18" ø B1: _____ B2: 2-2x10	C: 20" ø B1: _____ B2: 2-2x12	C: 22" ø B1: _____ B2: 2-2x12			
16'	C: 16" ø B1: _____ B2: 2-2x10	C: 20" ø B1: _____ B2: 2-2x12					

C = CAISSON DIAMETER, in | B1 = 1 PLY BEAM SIZE | B2 = 2 PLY BEAM SIZE

SINGLE SPAN DECK - CAISSON AND BEAM SIZES