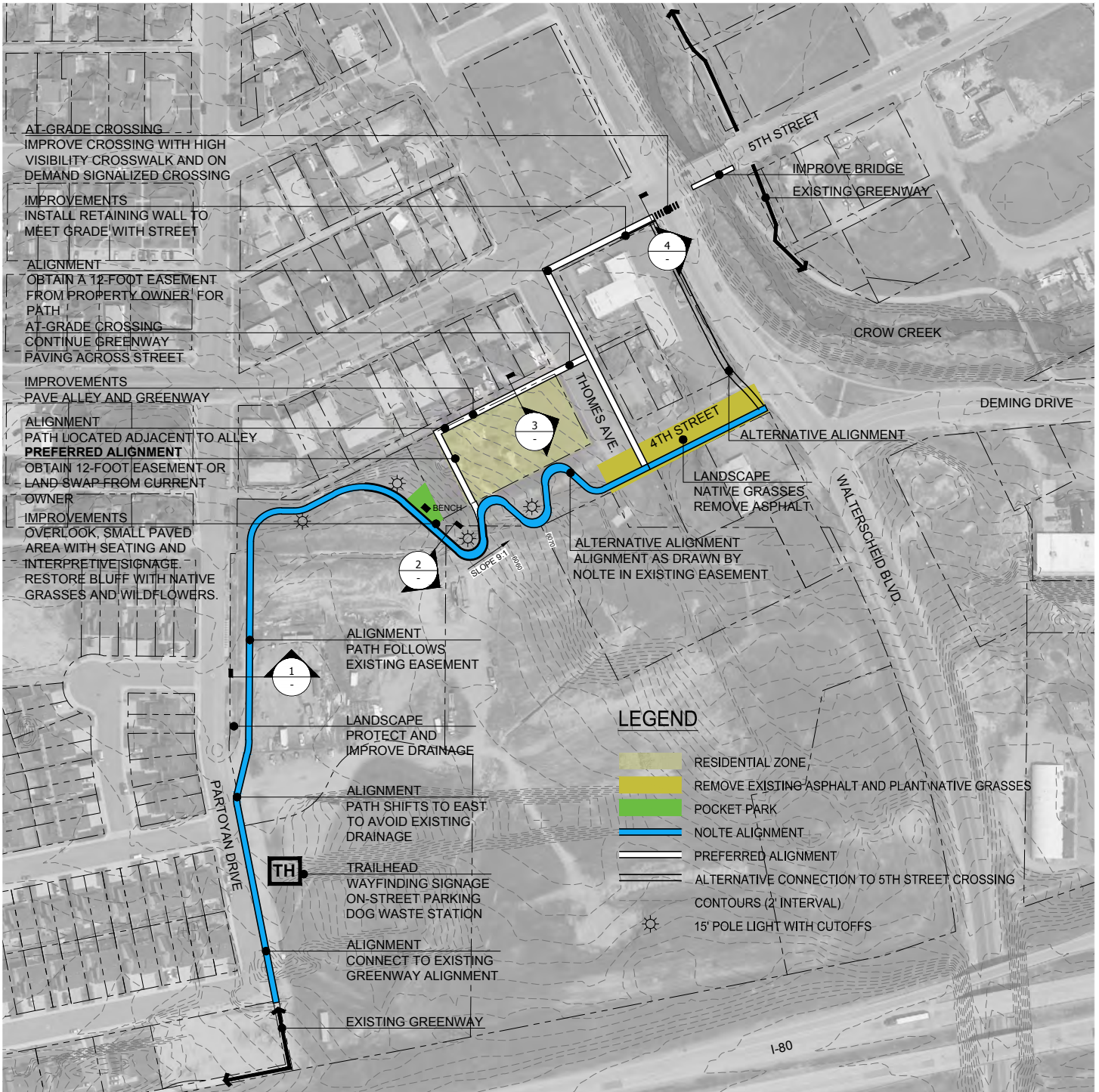
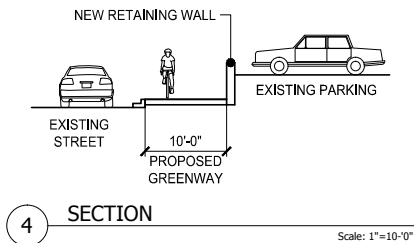
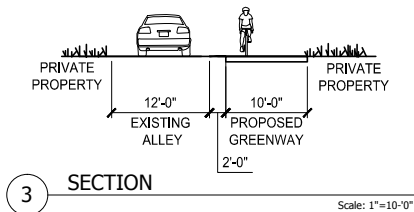
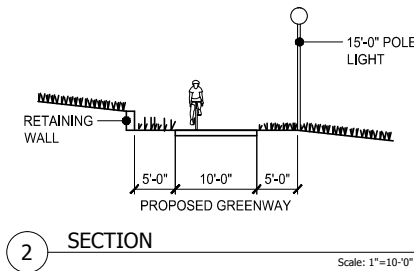
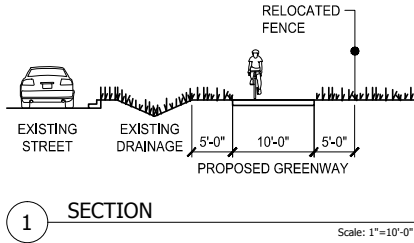


CHEYENNE ON-STREET BICYCLE PLAN AND GREENWAY PLAN UPDATE



CONCEPTUAL
NOT FOR CONSTRUCTION



Project Description

This greenway segment will create a connection between two existing greenways, South Park Estates on the west and Crow Creek on the east. The South Park Estates Greenway extends from Cribbon Avenue to Partoyan Drive. The City of Cheyenne worked with Nolte Engineering to develop an alignment for this proposed connection and an easement was obtained for that alignment, as shown in blue. The preferred option for the developer and the landowner, however, required crossing Walterscheid at 4th Street. The proposed crossing was not desirable for the City for safety reasons. A new alternative alignment, in white, is shown on this project sheet.

At Partoyan Drive, a trailhead is located with wayfinding signage and on-street parking. The proposed trail will parallel Partoyan Drive within an established easement along a drainage ditch. The greenway turns east to the top of a bluff. At the top of the bluff, a seating area is proposed with interpretive signage that takes advantage of the spectacular views of downtown Cheyenne. Where the greenway is not in a street right-of-way (ROW), pedestrian-scaled lighting will be spaced every thirty feet for safety and comfort.

From the bluff, the greenway would go downhill to a residential parcel. The preferred alignment west and north follows the edge of the parcel to the alley and continues to Thomes Avenue. A land swap would trade private land for the 4th Street right-of-way to the west of Thomes Avenue. If a land swap or easement can not be obtained from the landowner, route greenway through the existing alley and sign for mixed-use traffic.

At Thomes Avenue, the concrete path crosses the street, to maintain consistency and legibility, and continues to 5th Street. At 5th Street, the block will be reconstructed to accommodate the 10-foot wide greenway to Walterscheid Boulevard. At Walterscheid, high visibility crosswalk markings and a signalized crossing are proposed for the at-grade roadway crossing.

Proposed Improvements

- 10-foot wide concrete multi-use path from South Park Estates to Crow Creek
- 15-foot pole lights, four lights as shown on plans
- Enhancements to existing drainage on the east side of Partoyan Drive
- Overlook area at the top of bluff with seating, interpretive signage, and a trash receptacle
- Retaining walls for the steep slope area
- Greenway paving to cross Thomes Avenue, maintaining the route's legibility.
- Signage and a high-visibility crosswalk at the intersection of 5th Street and Walterscheid Boulevard

Project Summary

- 2,200 feet of 10-foot wide concrete greenway (for the preferred alignment)
- Trailhead and wayfinding signage
- One bench and trash receptacle
- Interpretive signage
- 51 pedestrian-scaled light fixtures
- One at-grade trail/roadway crossing

SOUTH PARK EXTENSION

CHEYENNE ON-STREET BICYCLE PLAN AND GREENWAY PLAN UPDATE

JUNE 2012

CHEYENNE, WY

